

Brighton's Elm Tree Collection

Children's Activity Map

Name

Age

School

In partnership with



Graphic Design: Jessica Keene and Jennifer Whitworth – University of Brighton Graphic Design Students
Illustration: Gustav Freij – University of Brighton Illustration Student

Word Search

Can you find these words?

1. Preston Twins
2. Elm
3. Tree
4. Dutch
5. Weeping
6. Wych
7. Klemmer
8. Himalayan
9. Brighton

Z	S	W	Y	C	H	J	M	M	A	C	P	E	H
T	V	E	L	M	F	B	O	X	K	P	R	Q	I
K	U	E	B	T	L	W	G	H	I	S	S	W	M
H	L	P	A	R	C	Q	U	T	Y	N	X	B	A
D	Y	I	S	O	J	M	B	N	I	I	O	Z	L
U	O	N	Z	F	Z	E	E	W	P	D	K	T	A
T	M	G	Y	A	I	R	T	C	Z	Z	L	B	Y
C	Z	X	F	M	K	N	Q	S	O	E	E	M	A
H	A	U	X	N	O	R	V	D	Q	P	M	L	N
E	B	K	N	T	D	Y	J	X	R	C	M	O	W
P	P	W	S	R	K	A	B	T	S	D	E	R	M
T	A	E	N	V	S	U	O	M	F	W	R	Q	A
B	R	I	G	H	T	O	N	C	R	J	B	A	S
P	P	R	S	Q	A	L	D	V	V	T	R	E	E

Facts about Elm trees:

- 1 The Preston Twins date back more than 400 years and are the largest English Elms in the World!
- 2 'Clone 28' Elm is one of the largest trees in the British Isles, and can only be found in Brighton & Hove
- 3 The Himalayan Elm is very rare in the British Isles but Brighton has 60!
- 4 We have more than 700 mature Dutch Elms in Brighton & Hove
- 5 There are 15 Elm Trees in Brighton which you won't be able to find anywhere else in the World!

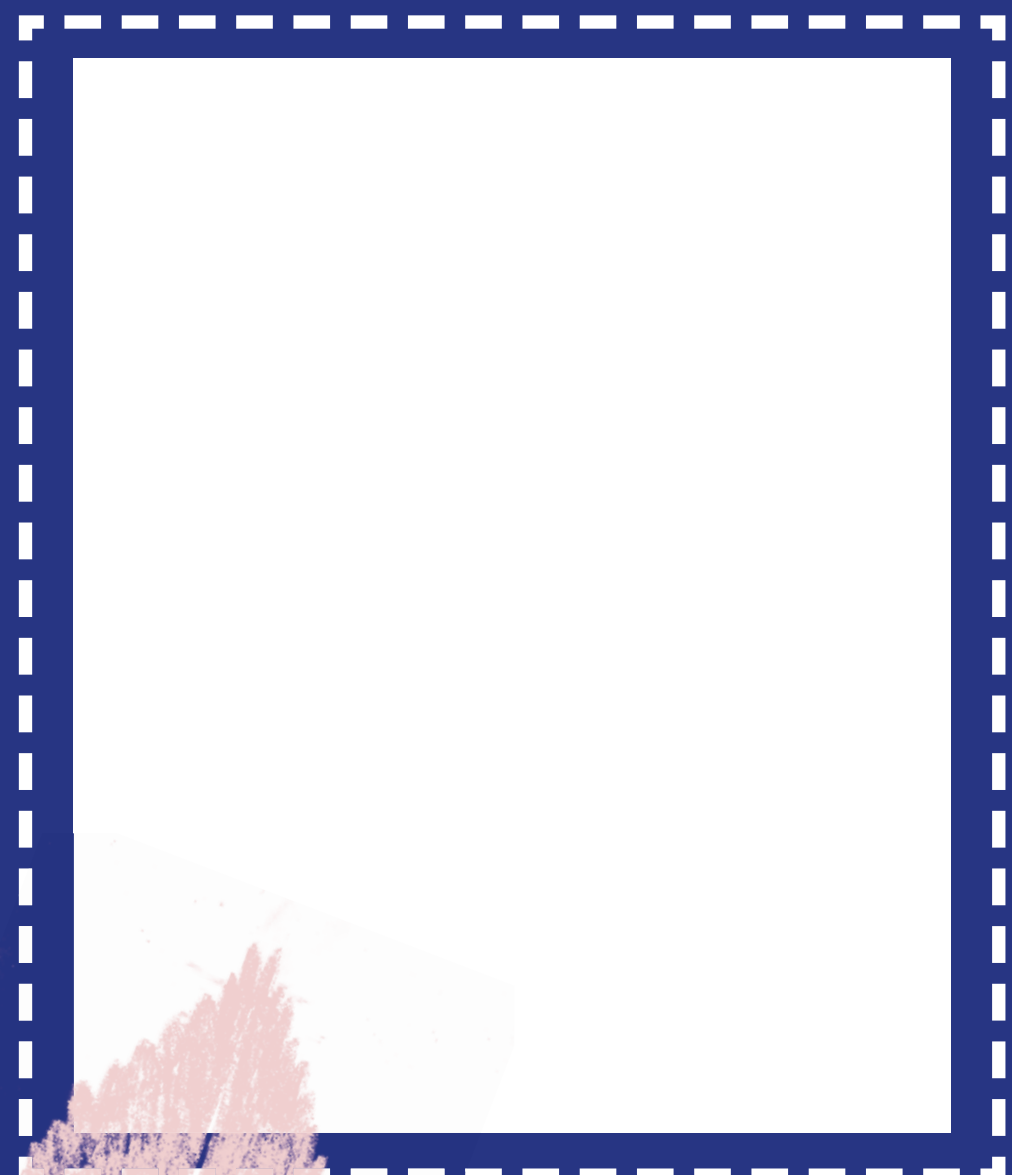
Why Elm Trees are important

- 1 Trees give out oxygen which is vital for us and wildlife
- 2 Lots of local wildlife use the trees for their homes
- 3 These trees have helped Brighton keep a high level of animal diversity!
- 4 The Elm trees in Brighton connect us to local people who were historically important

Draw a leaf from an Elm tree!



Make a rubbing from the bark of an Elm

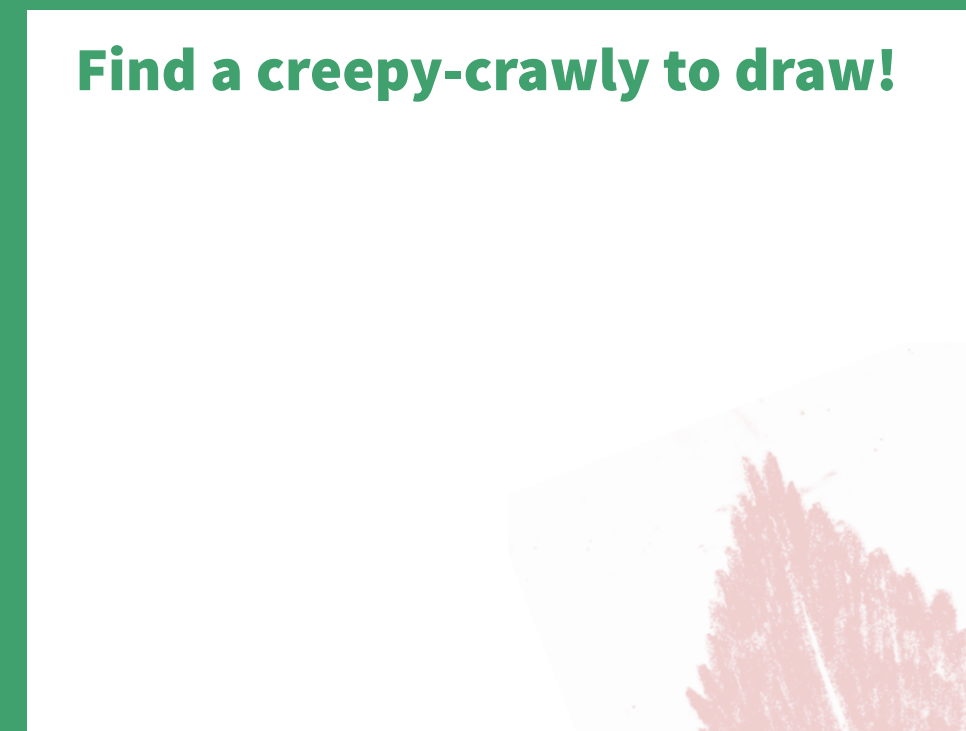


I am an Elm Tree Bark Beetle! I love eating the bark of the Elm Trees



I am a White-letter Hairstreak Butterfly! I am an endangered species and I live in the 'Preston Twins'

Find a creepy-crawly to draw!



Can you find...

- A Roman hat
- The number 260
- The Preston Twins
- Pavilion Garden Cafe
- Himalayan Elm
- King William III of Orange
- A Royal Crown
- A witch's broom

Brighton's Elm Tree Collection

Royal Pavilion Garden

This is our **Himalayan Elm**
They are very rare. Brighton & Hove has 60 altogether! In the Himalayas they grow taller than 30m.

This is our **Dutch Elm**
This species of tree was brought over by King William III of Orange. There are over **700 Dutch Elms** in Brighton & Hove!

These are our Preston Park **English Elms**
These two trees are called the '**Preston Twins**'. They date back 400 years and are the World's largest English Elms.

This is our **Weeping Wych Elm**
This species came from Scotland in 1856.

This is another one of our **English Elms**
It was brought to Britain by the Romans to support their grape vines.

This is one of our **English Elms**
It is the oldest in the Royal Pavilion Garden.

This is our **Clone 260 Elm**
This type of tree is famous for having leaves that around the edge look like sharp pointed teeth.

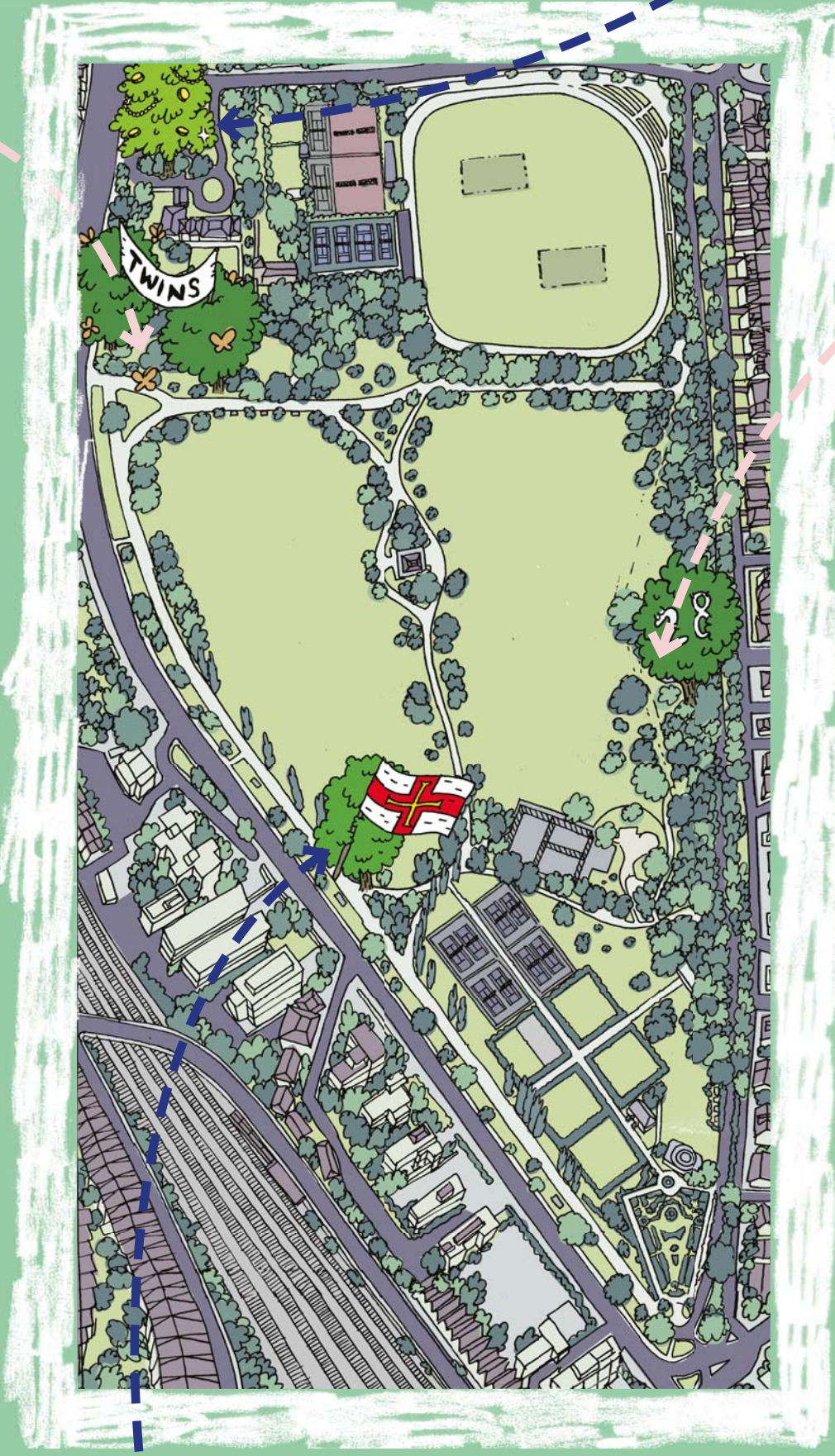
This is our **Klemmer Elm**
It was raised in a nursery in Holland around 1852. This tree is very rare in the British Isles, there are only three and they are all in Brighton & Hove!



Preston Park

This is our **Golden English Elm**
This tree is unusual in that it has golden leaves. The species originates from Holland and is very rare nowadays!

This is our **Clone 28 Elm**
It is the largest of its variety/species in the British Isles! This type of tree can only be found in Brighton & Hove now.



This is our **Wheatley Elm**,
a tree species that is from Guernsey. This specimen in Preston Park is the largest in the British Isles!

This is our **Queen's Park Wych Elm**
It's a native species of tree that grows in woodlands. This tree is well over 100 years old!

This is our **Huntingdon Elm**
This species originates from Huntingdon in Cambridgeshire. It is much-loved by many children and produces very large shiny green smooth leaves.

Queen's Park

This is our **Regal Elm**
The Regal Elm has come from the USA. It is fairly resistant to Dutch Elm Disease and grows to be tall and column-like in appearance.

This is our **Queen's Park Weeping Wych Elm**
It is very rare to see Wych Elms so close to each other like they are in Queen's Park!

